

# INTU Micro Pleated Blind

## Fitting, operation and maintenance instructions

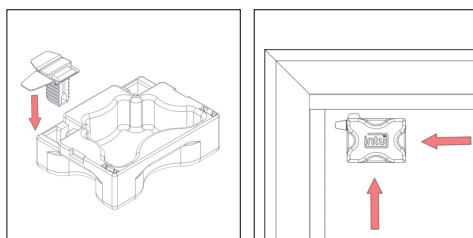
**Warning!** The operating instructions must be read before operating the blind.

### Fitting Instructions for INTU Micro Pleated Blinds

This blind should be installed by a person competent in DIY. If in doubt please consult a professional.

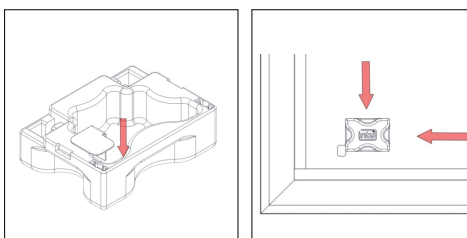
#### Step 1 - Fit the top corner brackets

Place the top corner bracket into the slot on the fitting tool. Position the bracket behind the rubber bead and carefully push until the metal legs are fully behind the rubber bead. Check that the bracket is square to the sides of the bead and securely in place. Repeat this process for the opposite side.



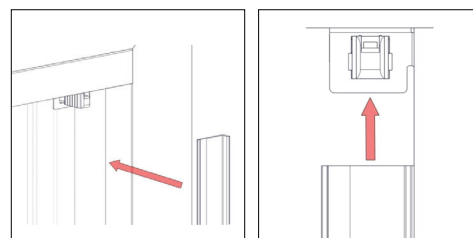
#### Step 2 - Fit the bottom corner brackets

Place the bottom corner bracket into the slot on the fitting tool. Position the bracket behind the rubber bead and push until the metal leg is behind the bead. Check that the bracket is parallel to the bead and securely fitted. Repeat this process for the opposite side.



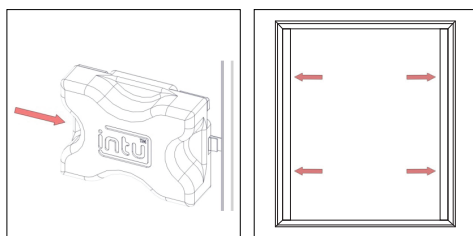
#### Step 3 - Install the side channels

Slide the side channel upwards until it slots into the top corner fixing bracket. Push the slot at the base of the side channel over the bottom corner bracket. Repeat this process for both sides.



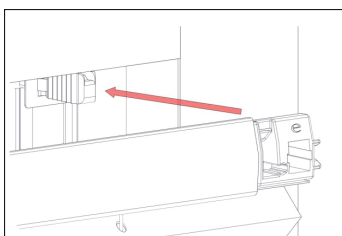
#### Step 4 - Fit the retention clips

At the appropriate position(s) on each side channel, fit the retention clips. Press each clip firmly into position using the fitting tool.



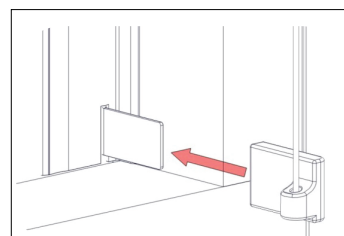
#### Step 5 - Install the top box

Align the top box endcaps with the top corner fixing brackets and push firmly until they clip securely into place.



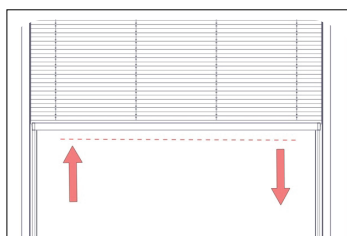
#### Step 6 - Attach the tensioning cord

Align the bottom tensioning cord attachment with the bottom corner brackets. Slide the cord attachment onto the bracket until it locks securely into place. Repeat this process for the opposite side.



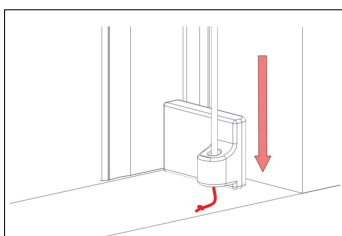
#### Step 7 - Align the bottom bar

To align the bottom bar horizontally, simply pull it into the desired position. It will remain in place under tension from the cords.



#### Step 8 - Adjust cord tension

If your blind requires additional tension, pull the cord through the hole in the bottom cord attachment until the blind has the desired tension, then tie a fresh knot to secure it.



## Operation & Maintenance

**Warning!** The operating instructions must be read before operating the blind.

### Operating instructions

Use the bottom bar to operate the blind. Pull the bottom bar downward to close the blind or push it upward to open it.

### Maintenance Instructions

This product is designed to be maintenance-free; however, we recommend carrying out regular visual inspections to ensure that no components are damaged, as this could lead to operating difficulties or pose a safety risk. If any maintenance is required, it should be completed promptly by a reputable blind company.

For light cleaning, gently wipe or dust the fabric with a soft brush or duster.